



**CityGate II - Petite Île / Klein Eiland**  
 Expedition Mews / Place de tous - Plein voor iedereen / Jardin de Dante - Dantetuin





**CityGate II - Petite Île / Klein Eiland**

Rue des Goujons / Place des créateurs de nuit - Grondelstraat / Plein van de makers 's nachts







01 Rue de Deux Gares - Elevation Sud



02 Rue de Goujons - Elevation Nord



03 Expedition Mews - Périphérie - Elevation Nord



04 Expedition Mews - Coeur d'îlot - Elevation Sud



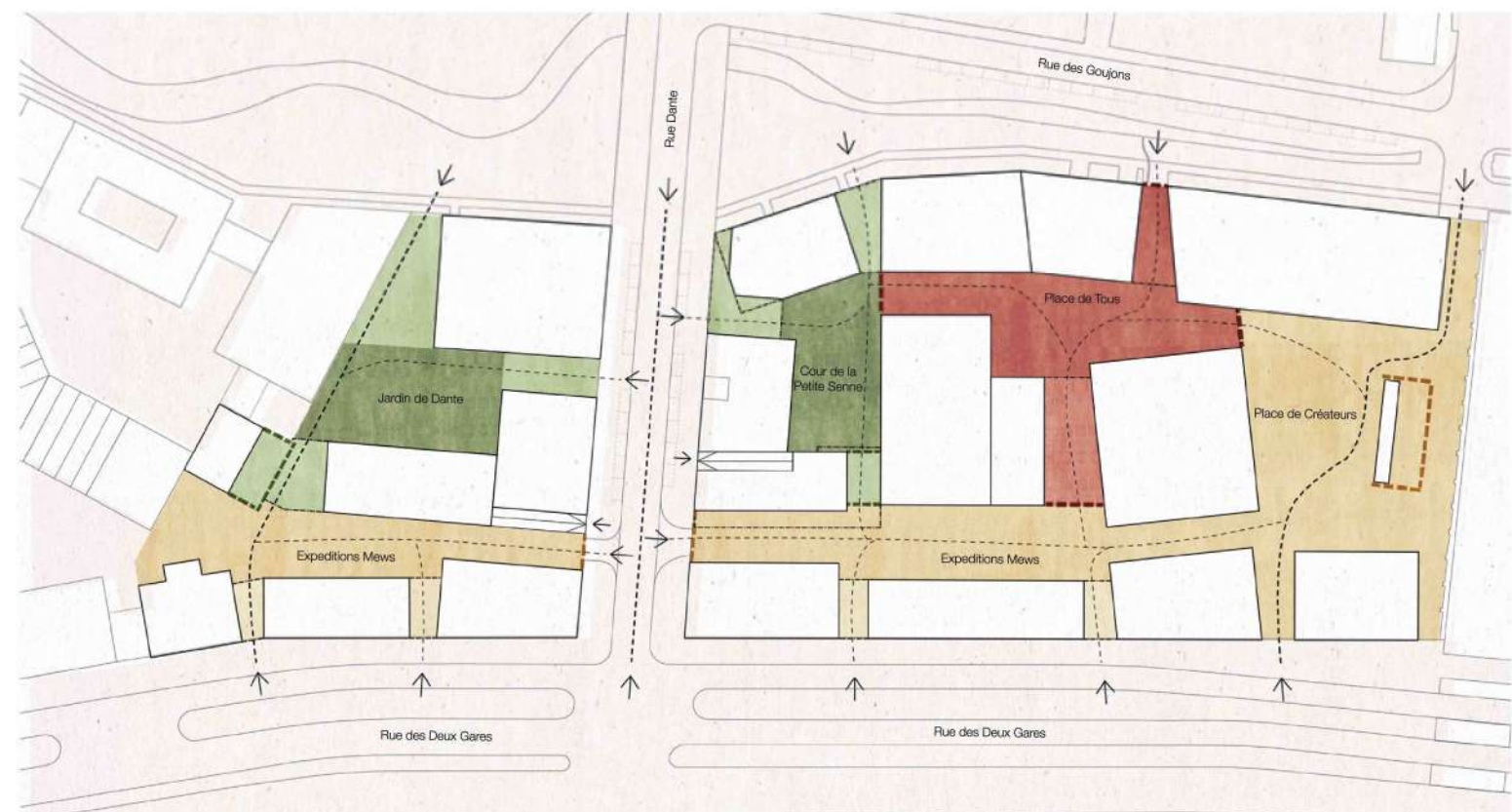
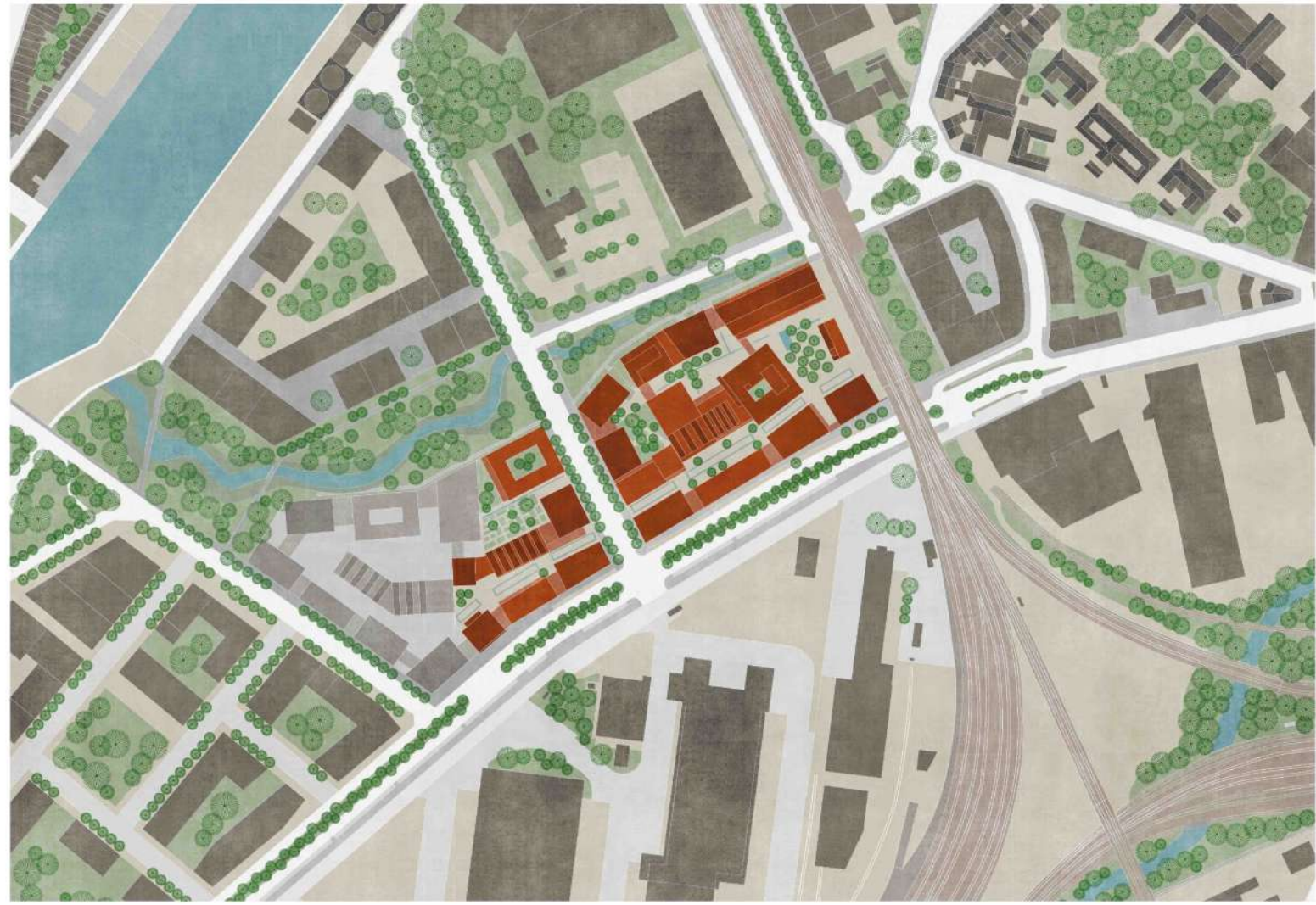
05 Rue Dante - Parcelle Est - Elevation Ouest



06 Rue Dante - Parcelle Ouest - Elevation Est



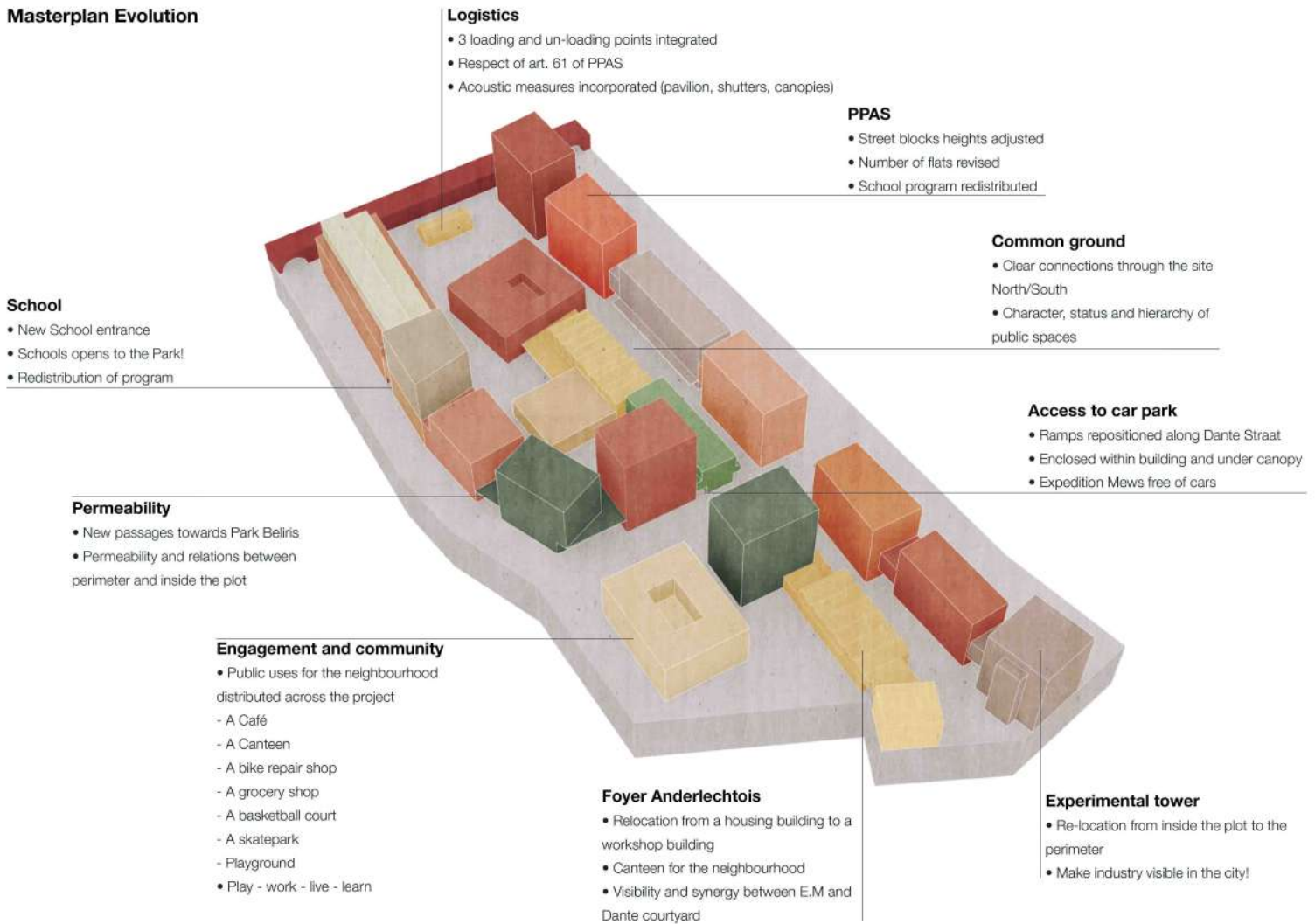




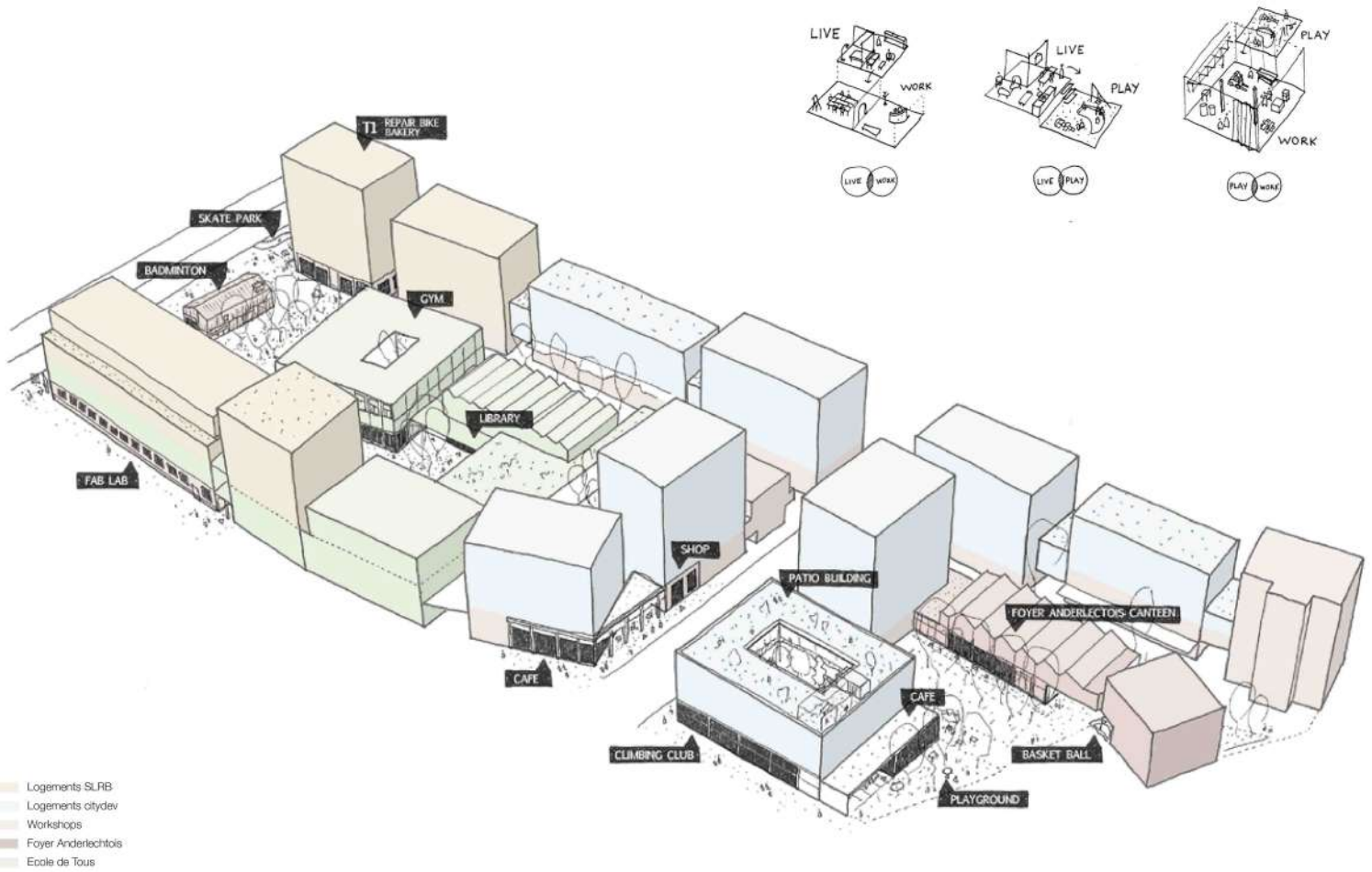
- Temporary enclosure - loading-unloading
- Courtyards for the community - collective
- Passages - private, open to collectivity
- Temporary enclosure - school hours
- Courtyard for the school - controlled access
- Passage - controlled access
- Temporary enclosure - loading-unloading
- Spaces for the neighbourhood - public
- Passages - private, open to public



## Masterplan Evolution

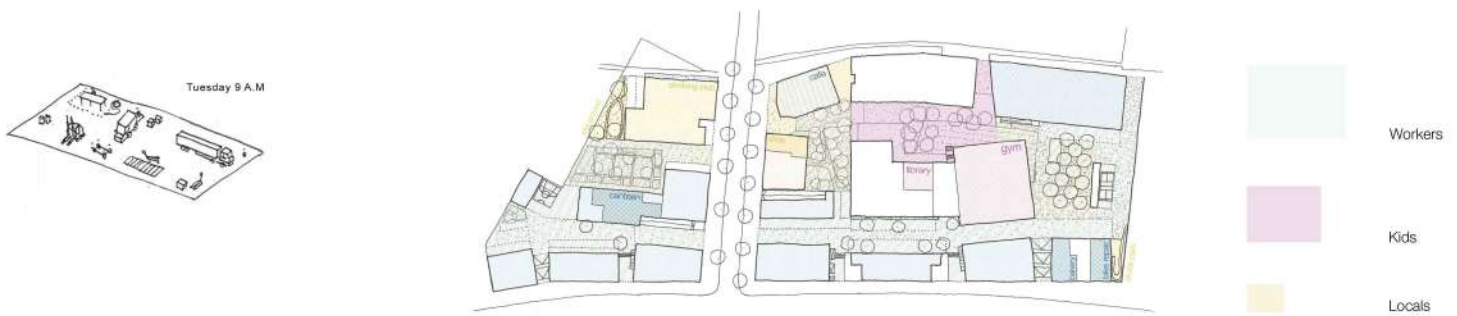


Work, Live & Play  
Activation on site

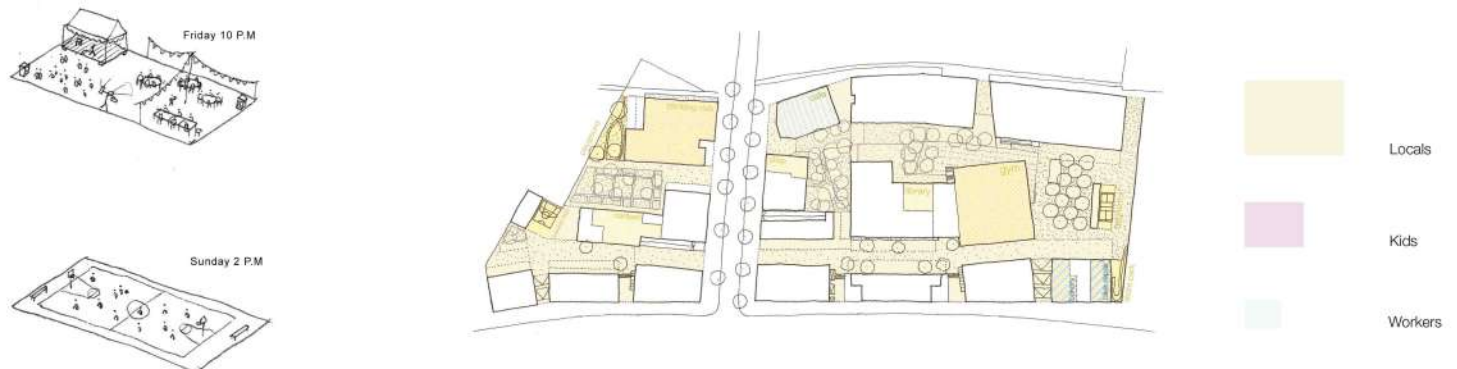


Work, live & Play  
Activity through temporality

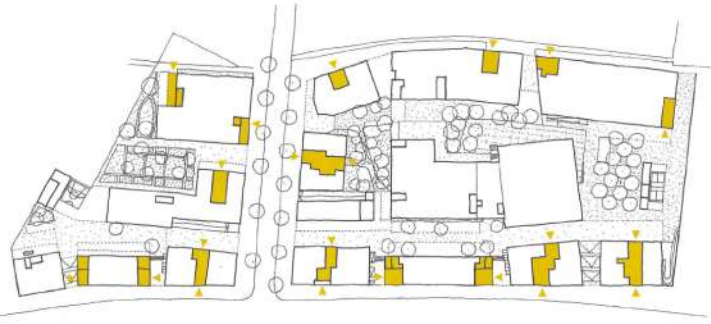
DAY



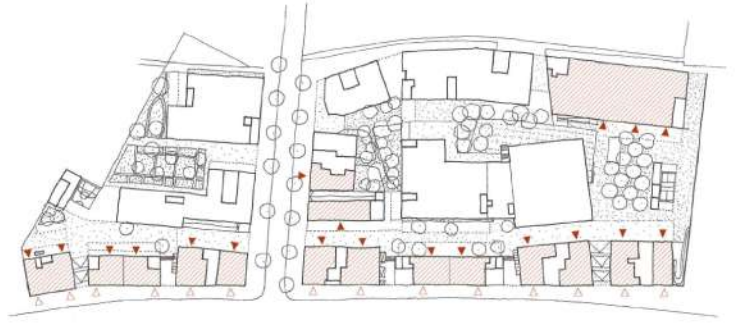
WEEK-END - EVENING



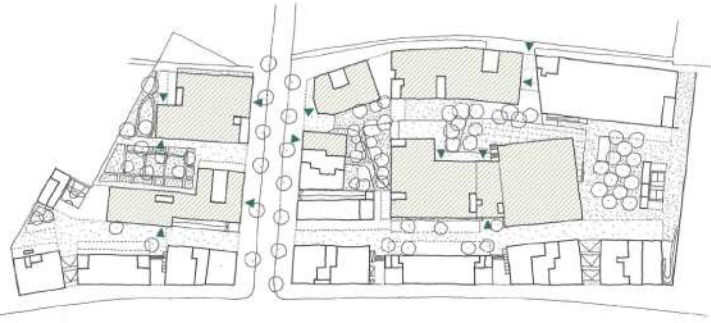




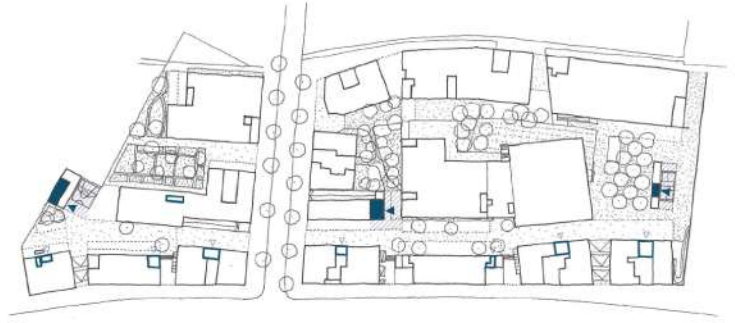
Housing - diversity of cores: entrance to street, side entrance, transversal entrances.



E.A. - Double visibility. Public entrance on bd industrie, logistic entrance to EM



Equipments - Entrances on primary public space (parc Rue Dante), activation of E.M



Parking - Strategic entrances spread on site, A.E. with private access to parking for logistic





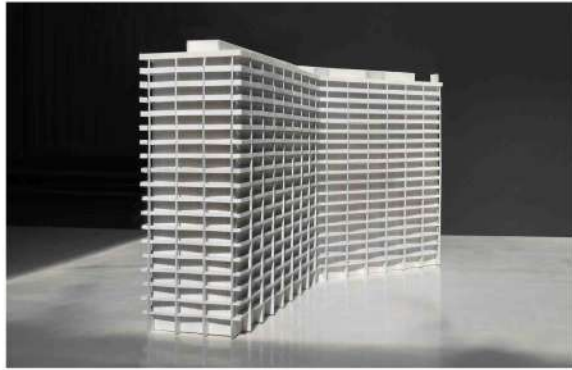


Situation actuelle / Huidige status

Séverin Malaut ©



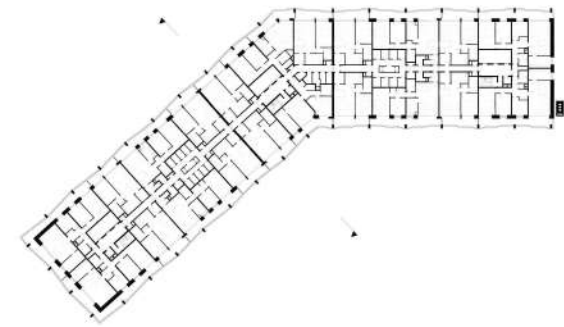
Nouvelle façade / Nieuwe gevel



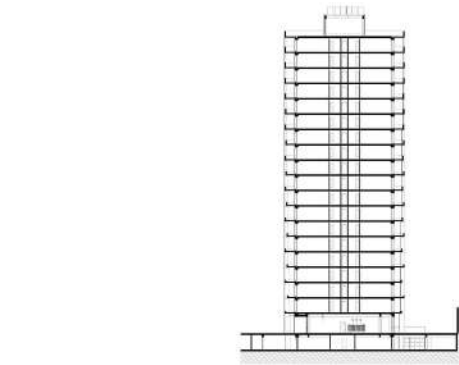
Maquette du projet / Model van het project



Adaptation du garde-corps en fonction de la hauteur (vue du 18e et du 1er étage) / Hoop-  
overstelling van de reling (zicht op de 18e en 1e verdieping)



Plan type / Standaardplan



Coupe / Sectie



**Tour des Goujons / Grondeltoren**  
Rénovation de la façade / Gevelrenovatie